



WMEA All-State 2022

Wind Symphony Audition Materials

The definition of schools whose students are eligible to audition for the 2022 Wind Symphony has been established by the WMEA Board as schools with 10-12 enrollments of 750 or fewer as defined by the WIAA official 2020-2024 classifications counts. For a complete list of schools eligible to audition for the 2022 WMEA All-State Wind Symphony, view the list posted on our website.

This packet includes audition materials for the 2022 WMEA All-State Wind Symphony. Students submitting their audition containing this material will ONLY be considered for the WMEA All-State Wind Symphony. If you wish to be considered for the other WMEA All-State instrumental groups (Concert Band, Wind Ensemble, Symphony Orchestra, Chamber Orchestra) you must also submit the **Winds and Percussion** audition materials as a separate application and audition. You would then be considered for ALL instrumental groups except jazz, which must also be submitted separately.

This is not the application packet. These materials are being provided now for preparation purposes. The entire application packet will be available September 1 online at www.wmea.org, with the deadline October 7th, 2021.

The conductor score can be found separately at www.wmea.org.

Important: Percussionists must audition on two of the three audition instruments:

Mallets, Snare Drum, Timpani.

SPECIAL NOTE

Please note that for these auditions the following instruments must audition as specified; the opportunity to indicate an interest and proficiency on these instruments will appear online.

Piccolo (apply on flute)

English horn (apply on oboe)

Contra bassoon (apply on bassoon)

Eb soprano clarinet (apply on Bb)

WMEA All-State Wind Symphony Audition

Flute

Exercise 1

Chromatic Scale

♩ = 60

Exercise 2

Etude Espressivo

♩ = 96

Exercise 3

Etude Technical

♩ = 120

Make sure you take the repeat on your recording

WMEA All-State Wind Symphony Audition

Oboe

Exercise 1 Chromatic Scale

♩ = 60



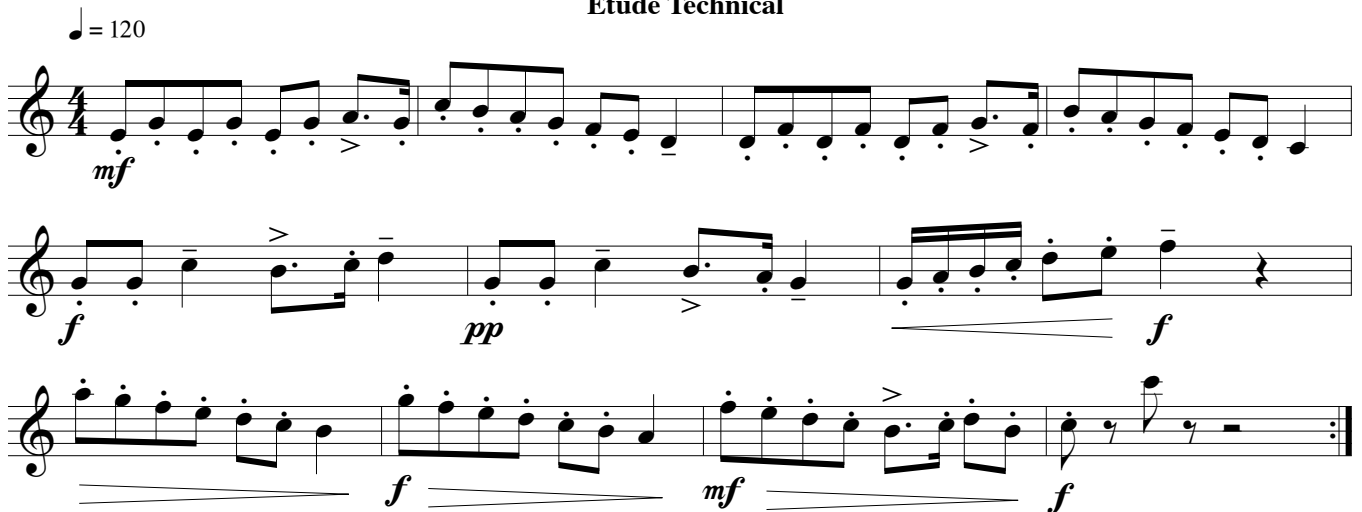
Exercise 2 Etude Espressivo

♩ = 96



Exercise 3 Etude Technical

♩ = 120



Make sure you take the repeat on your recording WMEA

WMEA All-State Wind Symphony Audition

Bassoon

Exercise 1 Chromatic Scale

♩ = 60



Exercise 2 Etude Espressivo

♩ = 96

mp *mf* *f*

Exercise 3 Etude Technical

♩ = 120

mf *f* *pp* *f* *mf* *f*

Make sure you take the repeat on your recording

WMEA All-State Wind Symphony Audition

B \flat Clarinet

Exercise 1 Chromatic Scale

$\text{♩} = 60$

Exercise 2 Etude Espressivo

$\text{♩} = 96$

Exercise 3 Etude Technical

$\text{♩} = 120$

Make sure you take the repeat on your recording WW

WMEA All-State Wind Symphony Audition

Alto Clarinet

Exercise 1

Chromatic Scale

♩ = 60



Exercise 2

Etude Espressivo

♩ = 96



Exercise 3

Etude Technical

♩ = 120



Make sure you take the repeat on your recording

WMEA All-State Wind Symphony Audition

Bass Clarinet

Exercise 1

Chromatic Scale

♩ = 60

Exercise 2

Etude Espressivo

♩ = 96

Exercise 3

Etude Technical

♩ = 120

Make sure you take the repeat on your recording

WMEA All-State Wind Symphony Audition

Alto Sax

Exercise 1

Chromatic Scale

♩ = 60

Musical notation for Exercise 1: Chromatic Scale. A single staff in treble clef, key of D major (one sharp), 4/4 time. The piece consists of a single line of chromatic eighth notes ascending from D4 to D5, followed by a whole rest.

Exercise 2

Etude Expressivo

♩ = 96

Musical notation for Exercise 2: Etude Expressivo. Three staves in treble clef, key of B-flat major (two flats), 3/4 time. The piece features expressive phrasing with dynamics ranging from *mp* to *f*. It includes slurs, accents, and hairpins.

Exercise 3

Etude Technical

♩ = 120

Musical notation for Exercise 3: Etude Technical. Three staves in treble clef, key of D major (two sharps), 4/4 time. The piece is a technical exercise with rapid sixteenth-note patterns and dynamics ranging from *mf* to *f*. It includes slurs and accents.

Make sure you take the repeat on your recording

WMEA All-State Wind Symphony Audition

Tenor Sax

Exercise 1 Chromatic Scale

♩ = 60



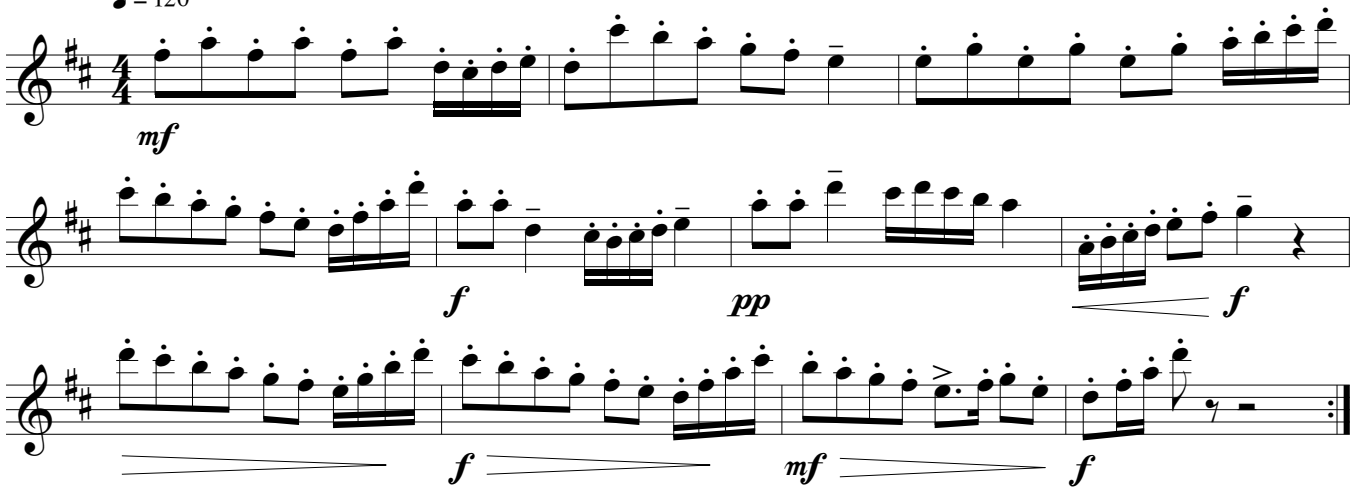
Exercise 2 Etude Espressivo

♩ = 96



Exercise 3 Etude Technical

♩ = 120



Make sure you take the repeat on your recording WMEA

WMEA All-State Wind Symphony Audition

Baritone Sax

Exercise 1 Chromatic Scale

$\text{♩} = 60$

Exercise 2 Etude Expressivo

$\text{♩} = 96$

Exercise 3 Etude Technical

$\text{♩} = 120$

Make sure you take the repeat on your recording

WMEA All-State Wind Symphony Audition

Trumpet
Euphonium TC

Exercise 1 Chromatic Scale

♩ = 60



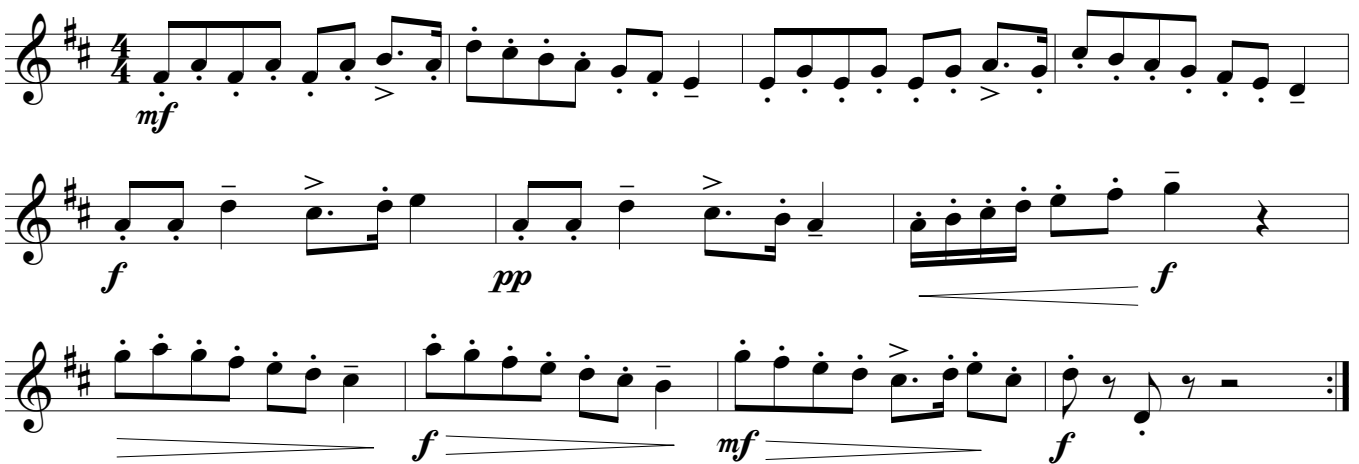
Exercise 2 Etude Espressivo

♩ = 96



Exercise 3 Etude Technical

♩ = 120



Make sure you take the repeat on your recording

WMEA All-State Wind Symphony Audition

F Horn

Exercise 1 Chromatic Scale

♩ = 60



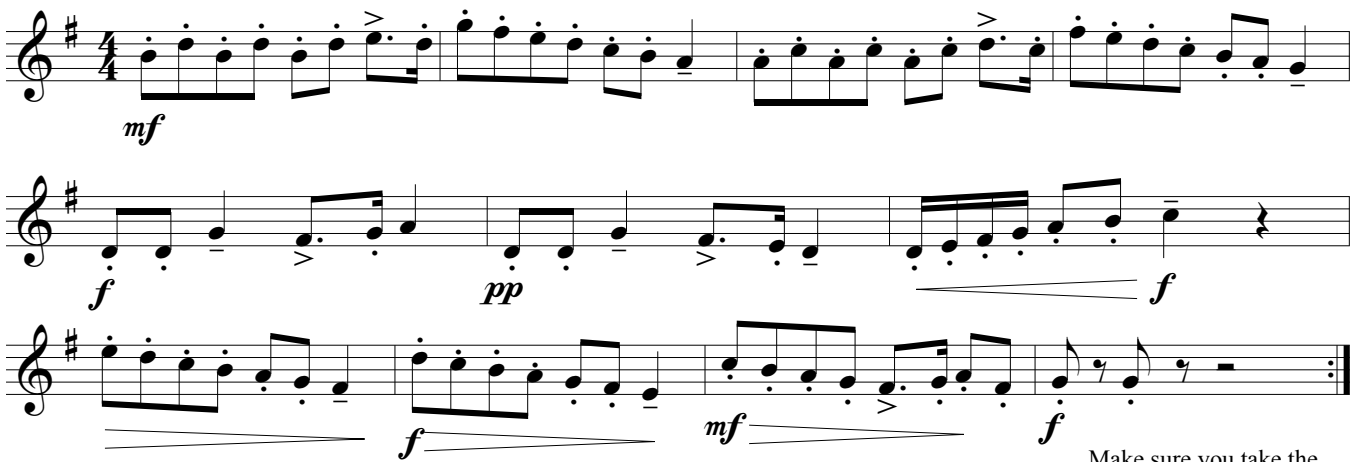
Exercise 2 Etude Espressivo

♩ = 96



Exercise 3 Etude Technical

♩ = 120



Make sure you take the repeat on your recording

WMEA All-State Wind Symphony Audition

Trombone

Exercise 1

Chromatic Scale

♩ = 60



Exercise 2

Etude Expressivo

♩ = 96



Exercise 3

Etude Technical

♩ = 120



Make sure you take the repeat on your recording

WMEA All-State Wind Symphony Audition

Euphonium

Exercise 1

Chromatic Scale

♩ = 60



Exercise 2

Etude Espressivo

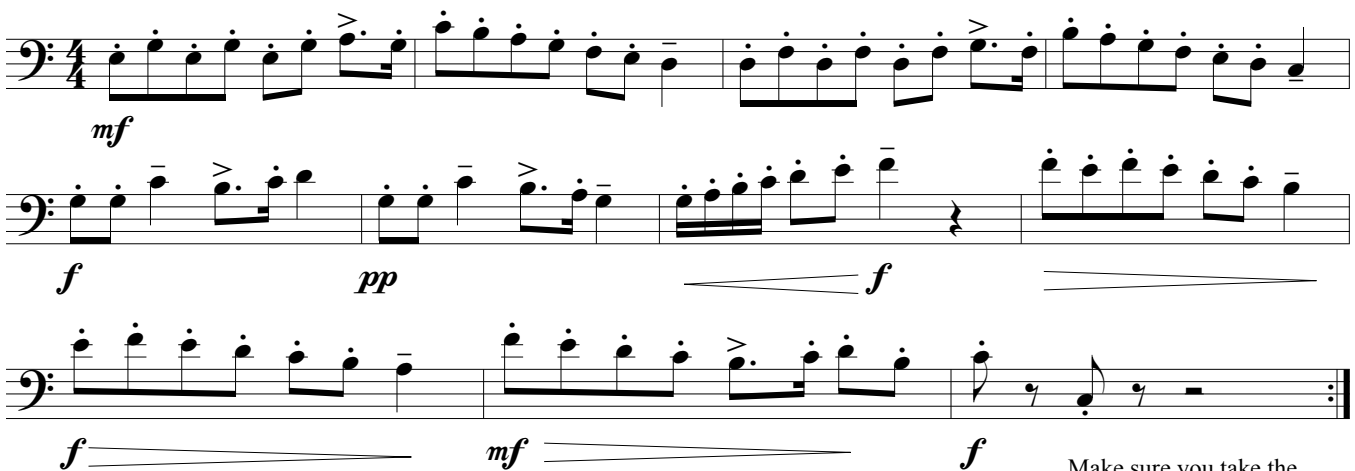
♩ = 96



Exercise 3

Etude Technical

♩ = 120



Make sure you take the repeat on your recording

WMEA All-State Wind Symphony Audition

Tuba

Exercise 1 Chromatic Scale

♩ = 60



Exercise 2 Etude Expressivo

♩ = 96



Exercise 3 Etude Technical

♩ = 120



*Make sure you take the repeat on your recording WMEA

WMEA All-State Wind Symphony Audition

Mallets

Exercise 1

Chromatic Scale

♩ = 60



Exercise 2

Etude Espressivo

♩ = 96



Exercise 3

Etude Technical

♩ = 120



Make sure you take the repeat on your recording

Percussionists must audition on two of the three instruments (snare drum, mallets, timpani)

WMEA All-State Wind Symphony Audition

Timpani

Exercise 1

Chromatic Scale

♩ = 60



Exercise 2

Etude Espressivo

♩ = 96

Exercise 3

Etude Technical

♩ = 120

Percussionists must audition on two of the three instruments
(snare drum, mallets, timpani)